

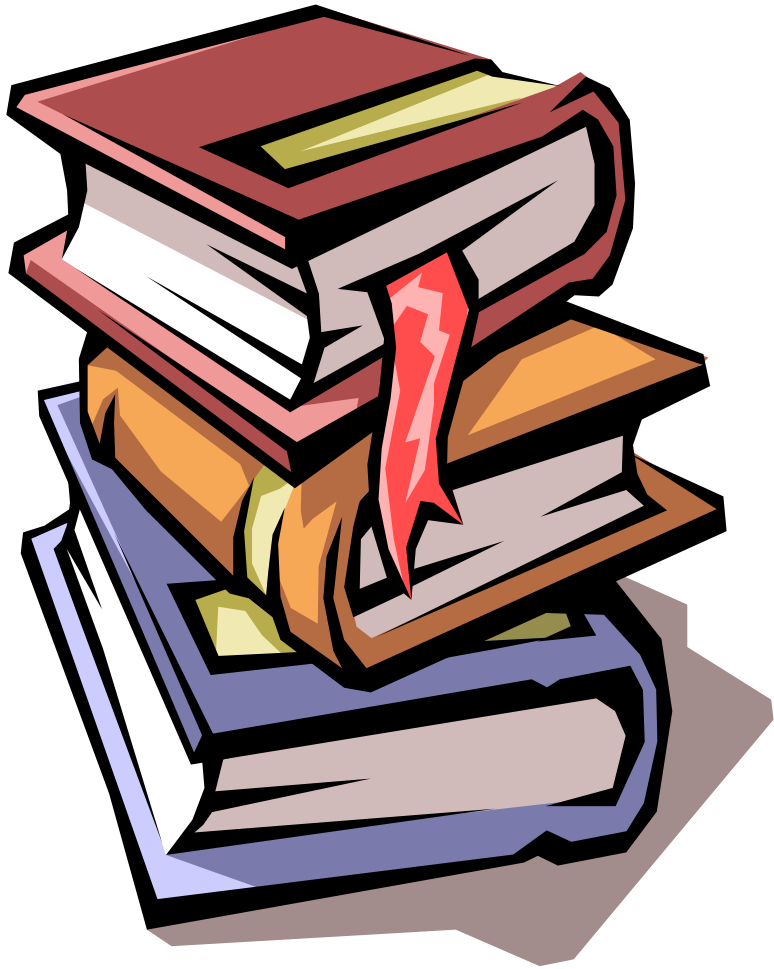
Am I Ready for College?

Using the “Accuplacer for High School” as a College Planning Tool for Students with Disabilities



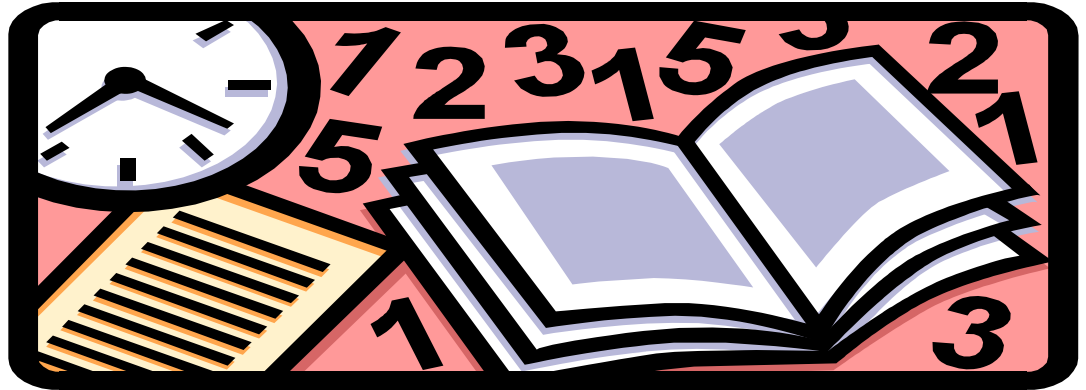
Steve Palmer,
Counselor/Advisor
Monroe Community College
(585) 292-2000
Spalmer@monroecc.edu

Maggie Herman, Regional Transition Coordinator
Midwestern Transition Coordination Site
(585) 377-4660 ext. 2602
Maggie_Herman@boces.monroe.edu

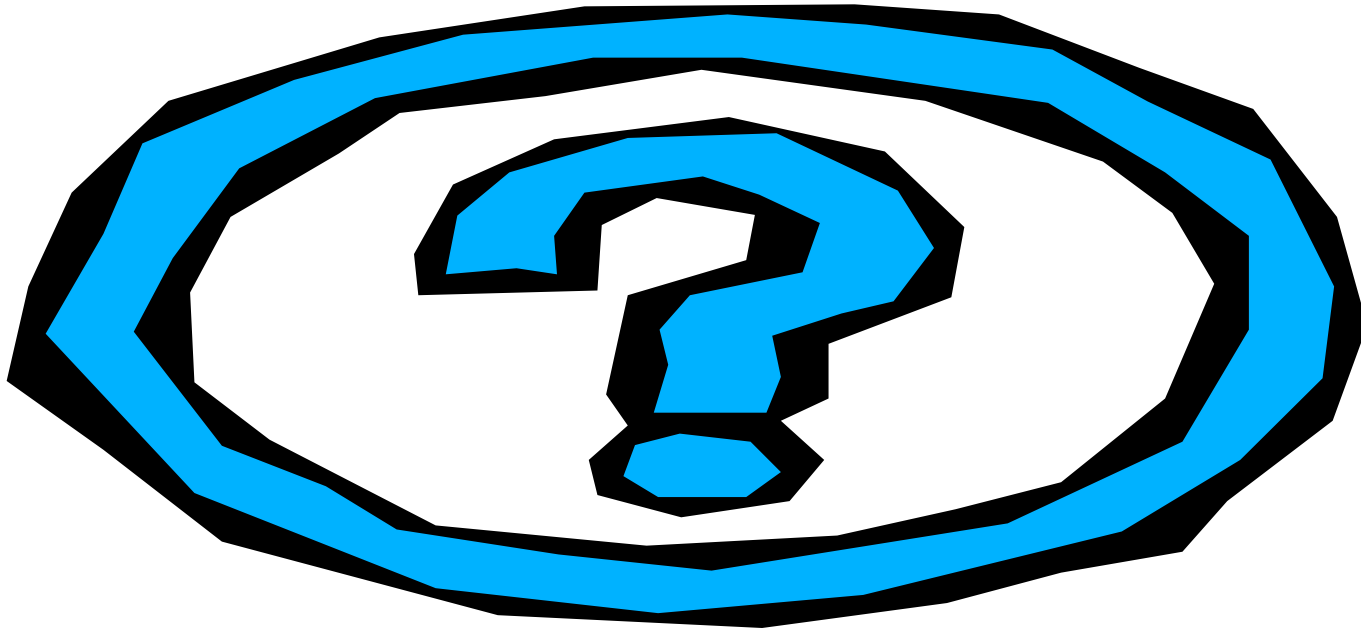


What is
the
Accuplacer?

The Accuplacer is.....



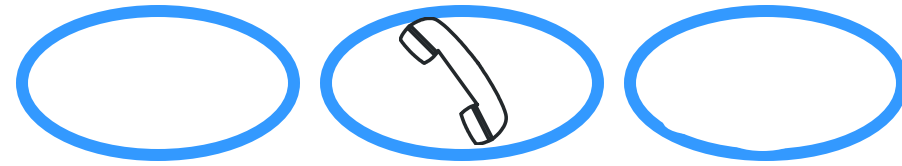
- Placement tests for incoming college students
- Nationally normed test customized and used by educational institutions around the world (ex. 2 & 4 year colleges, technical schools)
- Used to determine whether a student has the skills to take freshman coursework or needs to take developmental (a.k.a. transitional/remedial) courses first
- Developed by the College Board



What kind of questions
will a student encounter
on the Accuplacer?


To find out,
let's play...

“Who Wants to Take the Accuplacer”

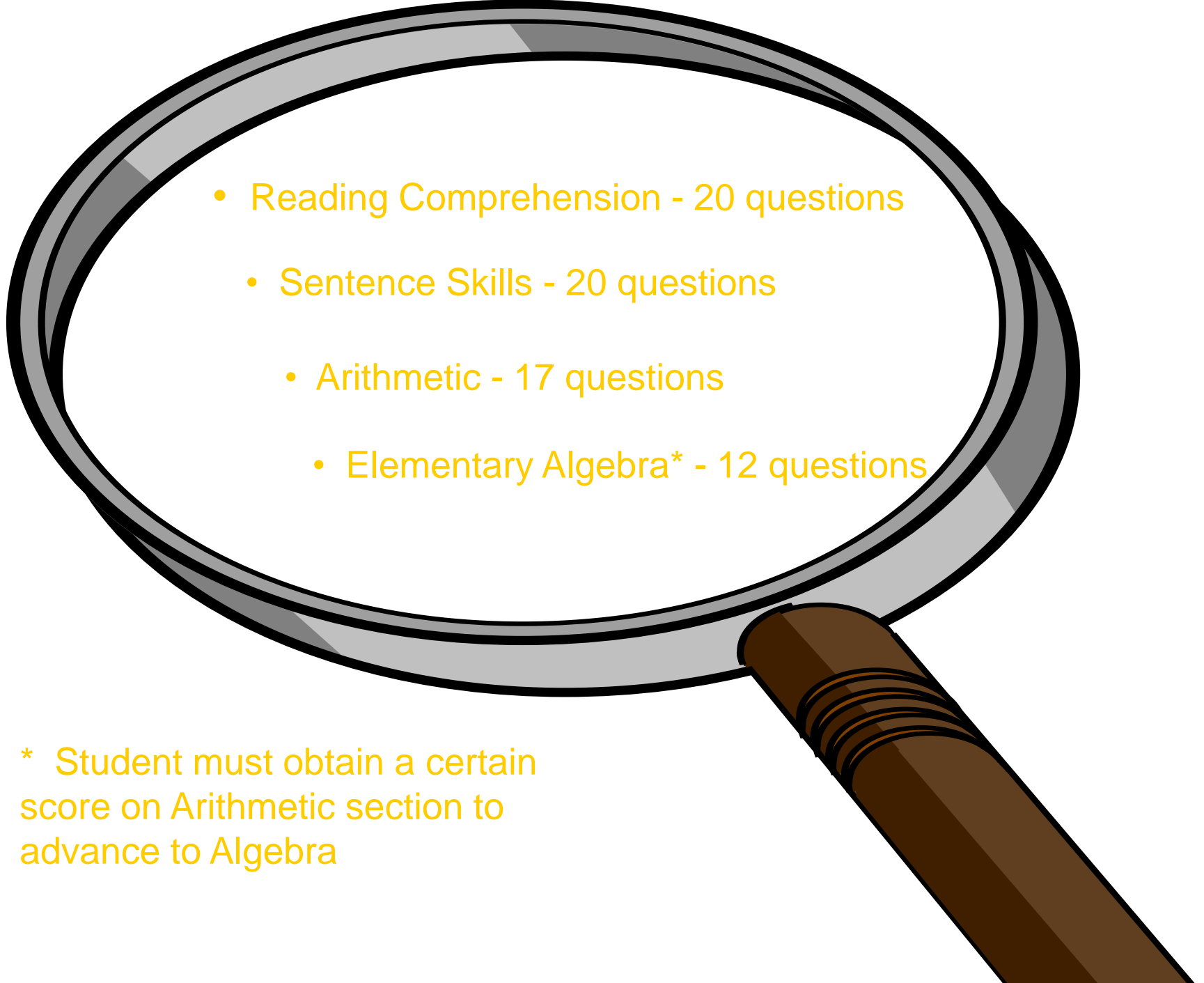


15	●	\$1 Million
14	●	\$500,000
13	●	\$250,000
12	●	\$125,000
11	●	\$64,000
10	●	\$32,000
9	●	\$16,000
8	●	\$8,000
7	●	\$4,000
6	●	\$2,000
5	●	\$1,000
4	●	\$500
3	●	\$300
2	●	\$200
1	●	\$100



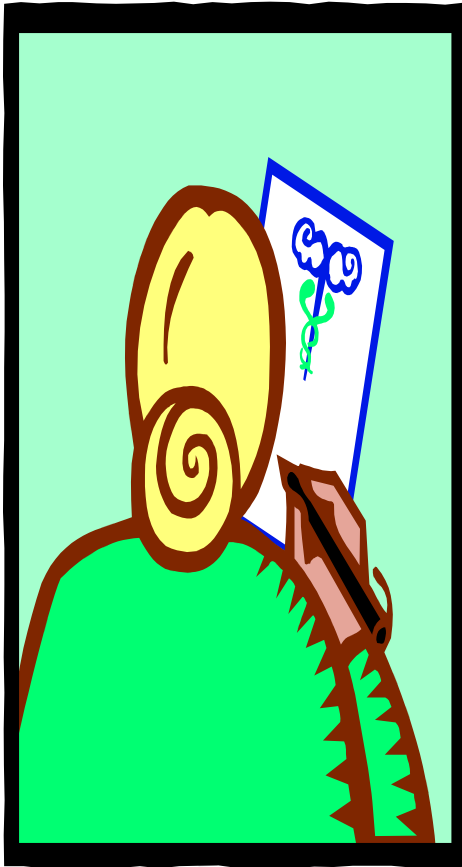


What skills
does the
Accuplacer
evaluate?

- 
- Reading Comprehension - 20 questions
 - Sentence Skills - 20 questions
 - Arithmetic - 17 questions
 - Elementary Algebra* - 12 questions

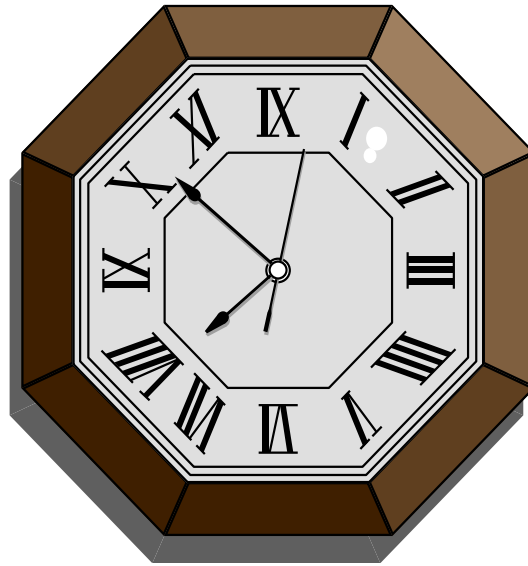
* Student must obtain a certain score on Arithmetic section to advance to Algebra

How is the Accuplacer administered?



- Via the Internet but alternate formats are available (ex. Braille, recorded on tape)
- The test is adaptive - it “zeroes-in” on just the right questions to ask based on previous answers
- No two tests are precisely the same

How long does the
Accuplacer take?



It is an untimed test. Most
students complete the test within
1 1/2 to 2 hours.

How did this opportunity come about?

- Staff from Monroe #1 BOCES were given the opportunity to be trained in administering the “Accuplacer for High School” through a Tech Prep grant
- Personnel from the Advisement and Placement Office at Monroe Community College (MCC) providing training in the administration and interpretation of the test
- As a result of this relationship with MCC, Monroe #1 BOCES staff are able to administer the actual Accuplacer to matriculated students at the student’s high school

Is a student's test accommodations on their IEP (Individualized Education Program) allowed on the Accuplacer?

The most common accommodations allowed are:

- Separate location
 - Extended time (the Accuplacer in an untimed test)
 - Use of calculator

For the actual Accuplacer, students who require a reader must take it with a Test Administrator at the college. A reader for the "Accuplacer for High School" can be used for the practice test.

Can a student study for the Accuplacer?

Preparation is suggested! Here are helpful resources:

Math

- [Mathmax.com](http://mathmax.com)
- [Mymathtest.com](http://mymathtest.com)
- [Math.com](http://math.com)
- [Purplemath.com](http://purplemath.com)

Reading/English

- rockvalleycollege.edu
- valencia.cc.fl.us

If a student has taken the SAT, is s/he waived from taking the Accuplacer?

If a student scored a minimum of 500 on the verbal/math sections of the SAT, s/he will be exempted from the corresponding section(s) of the test.



At what age/grade is the test administered?



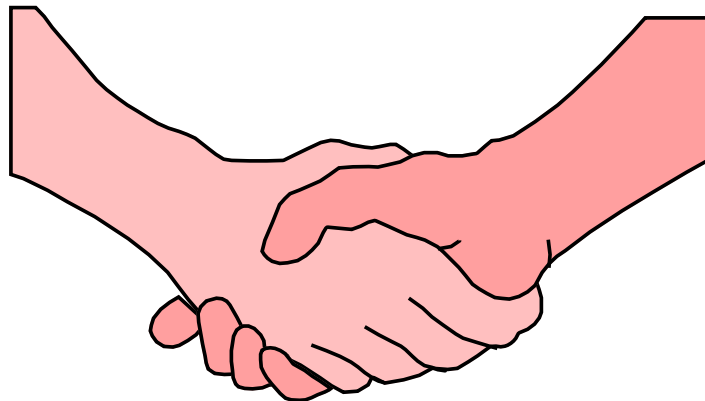
- Typically administered starting in the fall of Junior year up until graduation
- Test results from the practice test can be used to build skills and target areas in need of improvement
- Student can re-take the practice test to check on progress

Why use the “Accuplacer for High School” as a college planning tool for students with disabilities?

- The test provides data on whether or student is prepared for college level course work
- The test can assess what academic skills a student needs to develop prior to enrolling in college
- Test scores can indicate if a student will be required to take remedial classes prior to taking credit bearing classes

It's a Win-Win Situation!

- Students, parents and high school personnel obtain an accurate assessment of a student's readiness for college and can develop alternate plans if college work may not be possible
- Student experiences the rigor of college level work while still in high school
- Students familiarize themselves with the content and format of the test
- Reduces the amount of placement testing for MCC staff



How are test results interpreted?



Let's look at some samples.....

Thank you for your
participation!

